

Berridges Restaurant Review

Berridges Restaurant, situated above the jewellery shop, continues to go from strength to strength – so much so that pre-booking a table for lunch is now strongly advised.

Restaurant manager Louise Lockwood was also delighted to be interviewed for a wonderful five-page feature in the February 2005 edition of EADT Suffolk Magazine.

As the article pointed out, the restaurant's ambience is very unique in this age of coffee-on-the-go and pre-packed sandwiches which is how we have distinguished ourselves from the plethora of other lunchtime stop-offs available.

As anyone who has visited the restaurant will know, our aim is, and has always been, to provide customers with a haven of calm in the centre of Ipswich – somewhere where they can escape from the hustle bustle of the shops and partake in a leisurely breakfast, delicious home-cooked lunch or slice of cake and pot of tea.

The menu is updated frequently and daily specials are added by Louise to provide variety for our customers who truly appreciate the fact that all our food - from quiches to casseroles - are prepared from scratch on the premises using fresh produce.

The same goes for our sweet offerings, presented on a sweet trolley in the middle of the restaurant. Choose from the lightest homemade scone with jam and cream to the likes of strawberry and kiwi fruit Pavlova, delectable white chocolate cheesecake and chocolate fudge cake.

We look forward to welcoming you to the restaurant soon. In the meantime, here is another recipe from the team for you to try at home.



Lime Mousse with Mango Sauce - serves 4

Ingredients

250g Fromage Frais
Zest of 1 Lime
1 Tablespoon caster sugar
125ml double heavy cream

Mango Sauce

1 Mango
Juice of the Lime
4 tspn Caster sugar

To Decorate

4 Cape gooseberries
Strips of lime rind

Method

Put the fromage frais, lime rind and sugar in a bowl and mix together.
Whisk the double cream in a separate bowl and fold into the fromage frais.
Line 4 decorative moulds or ramekin dishes with cling film and divide mixture evenly between them.
Fold the film over the top and press down firmly and place in fridge for two to three hours.

For the Sauce

Peel the skin from the mango and cut 12 thin slices, set aside and put remaining flesh into blender with the limejuice and sugar. Blend until smooth. Turn out the mousse from the moulds onto serving plates.
Arrange 3 slices of mango on each plate; pour some sauce around the mousse.
Decorate and serve chilled.

Berridges can be found at:
4 Dial Lane, Ipswich, Suffolk IP1 1DL
Telephone: 01473 225525
Fax: 01473 225524
www.berridges.com
Email: berridges@msn.com

Berridges

JEWELLERS

>> spring/summer 2005

A warm welcome to the third Berridges newsletter - packed full of interesting features, not forgetting another delicious recipe from the restaurant team.

During our first decade we have earned a glowing reputation both for the quality and exclusivity of our jewellery, and for the unrivalled service and expertise that we offer our customers. One such area of expertise is jewellery valuation.

'Valuation' is a term widely used to mean a document recording and describing an item and assigning a monetary value to it.

Professional jewellery valuation is based upon many years of experience allied to formal training in gemmology and other specialist areas of product knowledge. The highest level of valuation is represented by the National Association of Goldsmiths' (N.A.G.) Registered Valuer Scheme.

Established in 1894, the N.A.G. promotes high ethical standards among its membership which comprises retail jewellers who are committed to an honest and knowledgeable approach to their business.

As well as being a registered valuer with the N.A.G., Christopher Hardman also holds the prestigious position of being one of only eight elected members on the N.A.G. Committee responsible for overseeing and monitoring more than 300 other registered valuers in the UK.



news >>

The Importance of a Professional Valuation



Consider how you would feel if you lost a precious watch or ring which had not been valued by a suitably qualified valuer. Could you describe it well enough to an insurance company, a jeweller or the police, and then prove that it was yours, along with a current replacement value?

If the answer is no, now is the time to organise a professional valuation, bearing in mind that only by supplying insurers with an up-to-date insurance schedule - preferably prepared by a N.A.G. registered valuer - can you be sure to be in a position to establish a valid and provable claim.

To discuss your valuation needs further you can contact us on 01473 225525 or pop in to see Christopher at the shop.



National Association of Goldsmiths Member

>> spring/summer 2005



Introducing
Thomas Sabo STERLING SILVER

You need only flick through the pages of a glossy fashion magazine to see that when it comes to keeping up in the fashion stakes, the style of jewellery we choose to wear is every bit as important as our choice of clothes, shoes and handbag.

Indeed the right piece of jewellery can transform even the most average outfit into something unforgettably striking.

That is why we are delighted to introduce to Berridges a beautiful new line of jewellery by the German manufacturer Thomas Sabo.

This new line is timed perfectly to coincide with the spring/summer season, when we can look forward to showing off our jewellery with flattering summer tans and lighter fabrics.

Since being established back in 1984 Thomas Sabo has become something of a must-have name among women who love stunning, colourful jewellery. And we are sure that the brand will take off as well here in Suffolk as it has in some of the world's most stylish towns and cities.

The company's new collections are launched each spring and autumn to coincide with the major international fashion shows in London, Milan, New York and Paris and the independent interpretation of seasonal trends, styles and colours always lends the jewellery a direct reference to current fashions.

One of the prime characteristics of this jewellery is its versatility. There is something to suit every kind of occasion and outfit, so you will find a piece to go just as well with a formal business suit as an evening dress or leisurewear for example.

And while Thomas Sabo's jewellery has a high fashion look, it is important to point out that there is absolutely no compromise on quality with this brand, each piece being beautifully crafted in sterling silver that will bring you pleasure for many years to come



news >>



Magic

GEORG JENSEN

Fusion

Fusion is based on the characteristic of simple gold units combined in several ways to enable the client to create a personal piece of jewellery. Truly unique, Fusion is mystery and simplicity combined creating the most beautiful piece of jewellery.

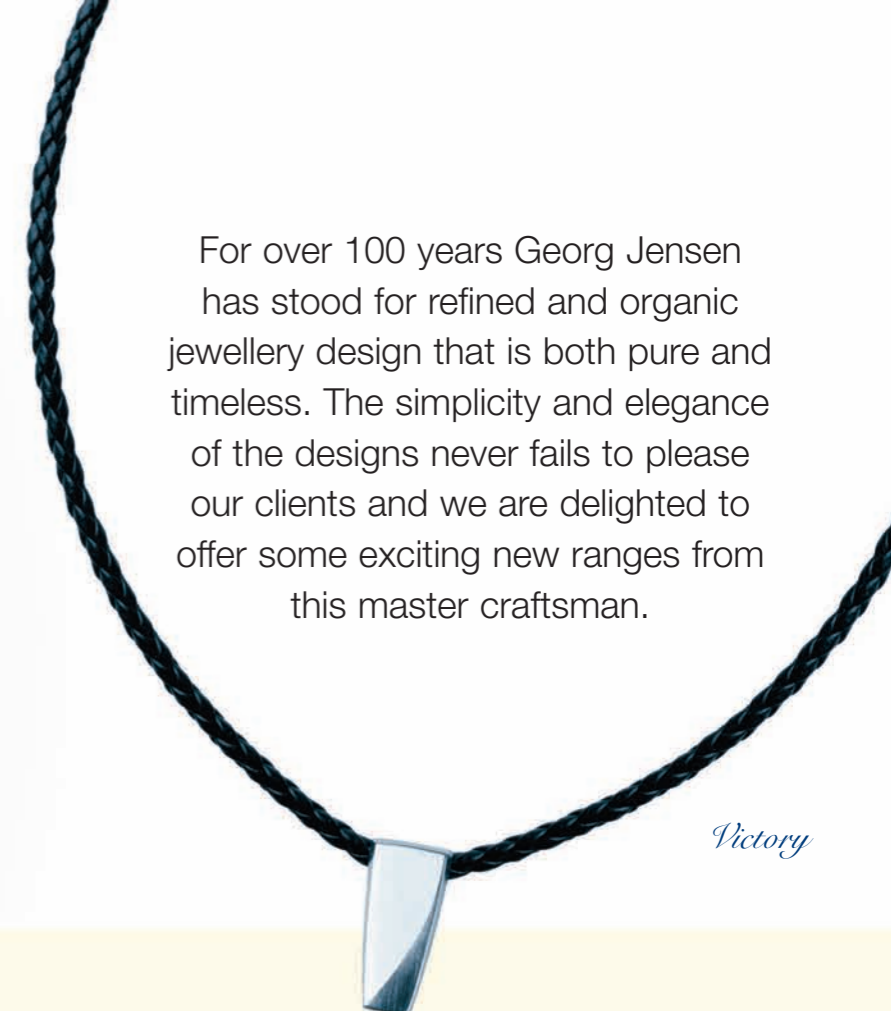
Magic

Create your own magic ring. Magic is an exciting interactive ring. In its base form, Magic consists of 18-carat white or yellow gold. Both come with an insert ring in matt black rubber. The amazing stark contrast between the two materials gives the ring a unique and beautiful effect. The basic ring can also be paired with additional insert rings

Introducing the new Men's range

Refined but never flashy, each piece of the men's collection draws strength from the subtle detail in its design and the uncompromising craftsmanship with which it was made. The new collection

For over 100 years Georg Jensen has stood for refined and organic jewellery design that is both pure and timeless. The simplicity and elegance of the designs never fails to please our clients and we are delighted to offer some exciting new ranges from this master craftsman.



Victory

allowing you to create a ring reflecting your own individual style.



Fusion